



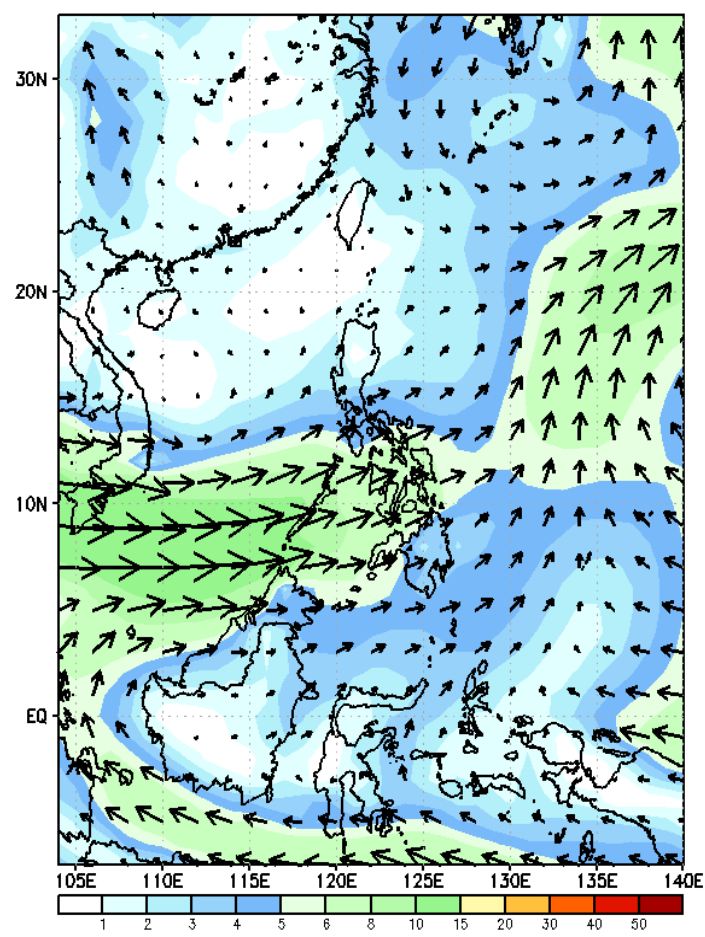
# Week 1 & Week 2 Forecast for the Philippines using GEFS Model



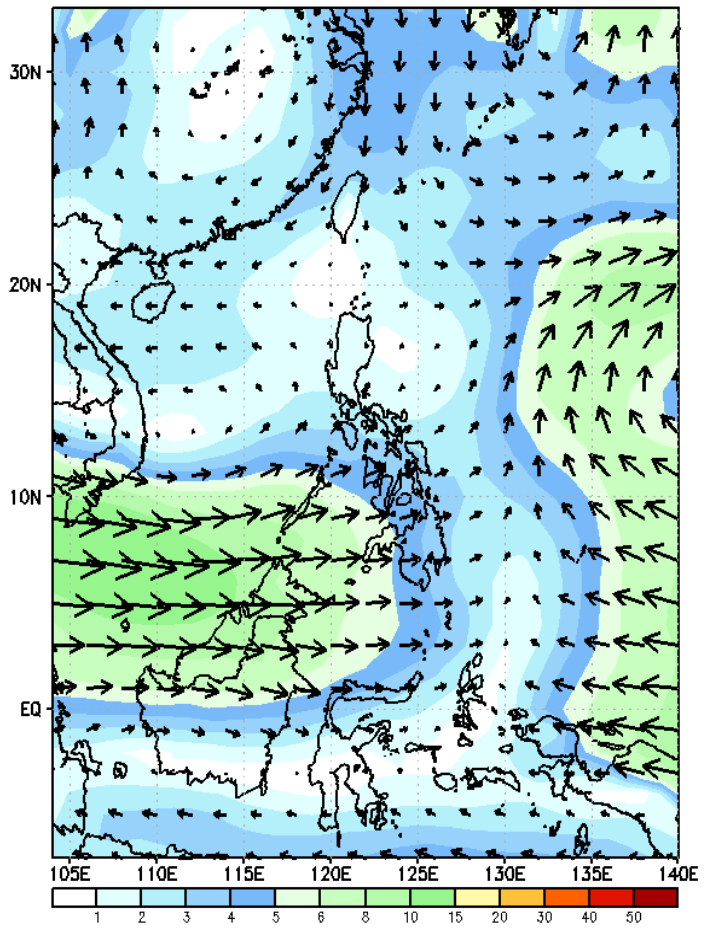
# GEFS Week-1 Wind Forecasts:

Week 1: Aug 30- Sep 05, 2024

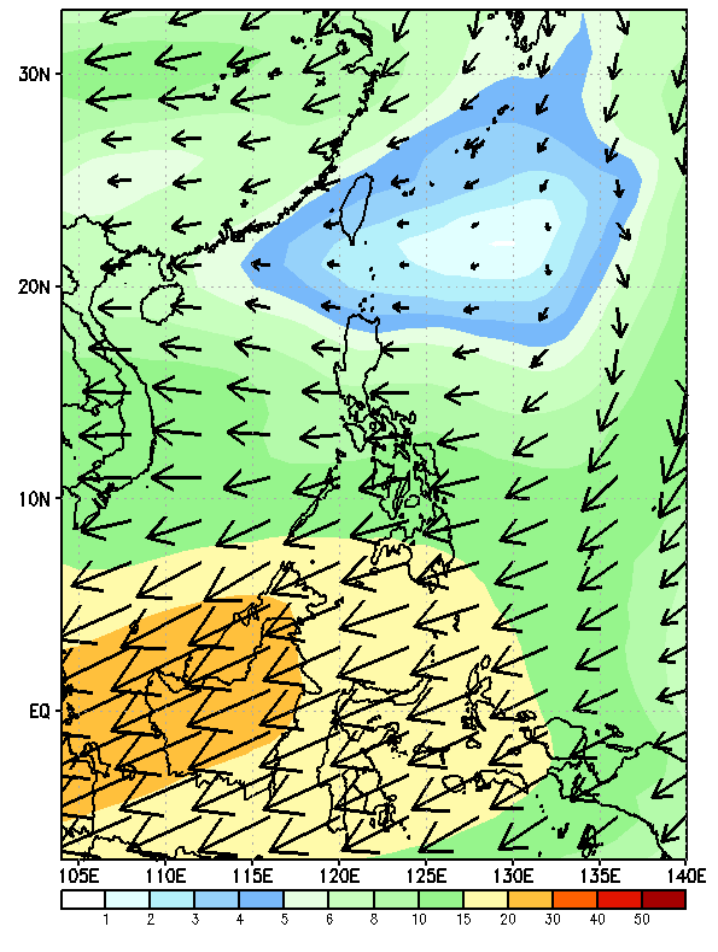
GEFS Week-1 850-hPa Wind Total  
Valid: 20240830 - 20240905



GEFS Week-1 700-hPa Wind Total  
Valid: 20240830 - 20240905

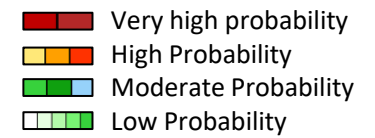


GEFS Week-1 200-hPa Wind Total  
Valid: 20240830 - 20240905



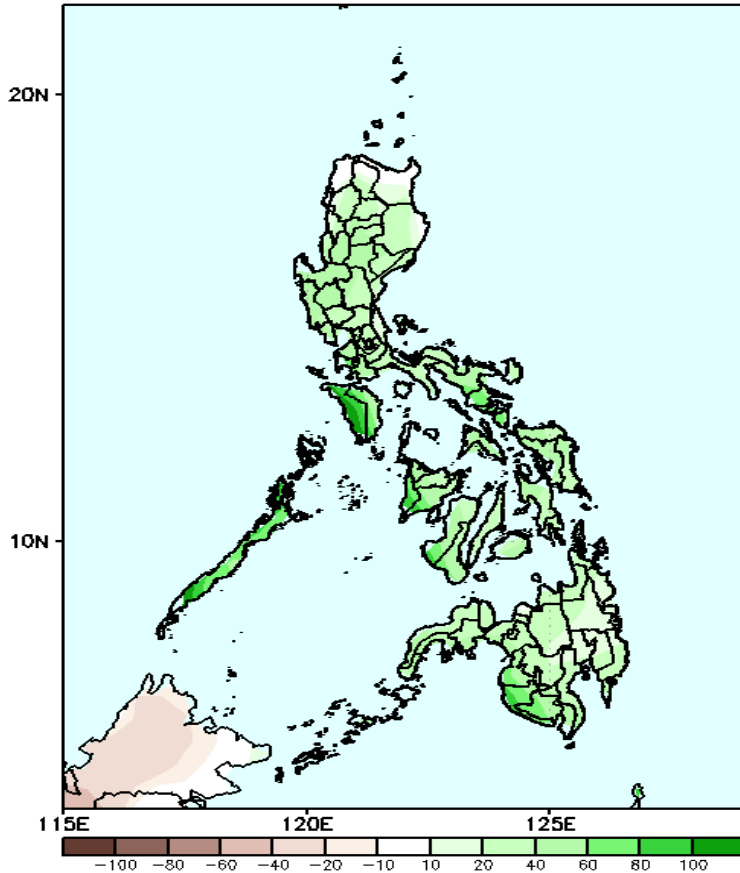
Southwest Monsoon affecting most parts of the country.

# Precipitation Anomaly and Exceedance Probability > 25/50 mm



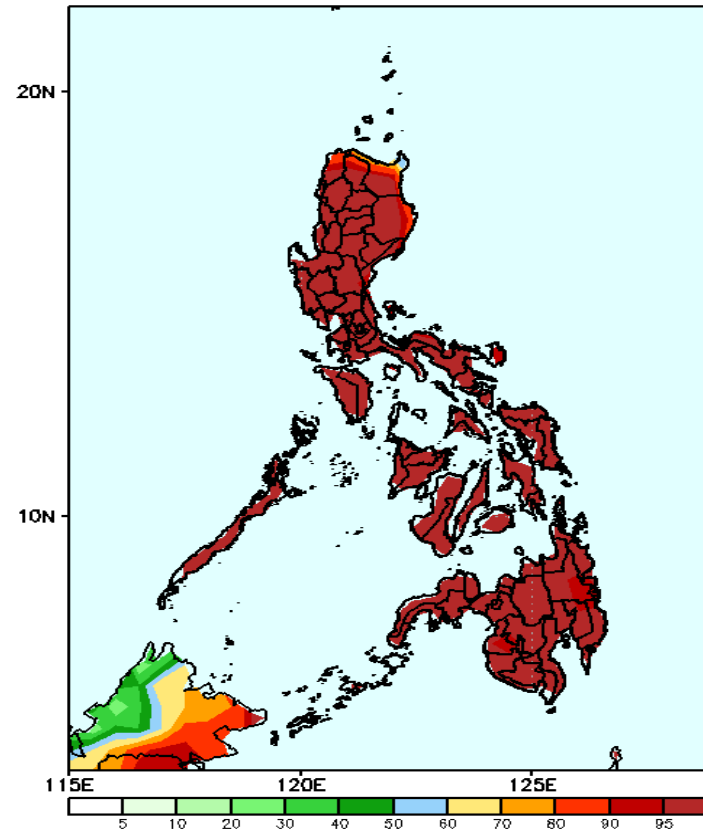
Week 1: Aug 30- Sep 05, 2024

GEFS Week-1 Precip Anomaly  
Valid: 20240830 - 20240905



40-100mm increase in rainfall is likely in most parts of the country.

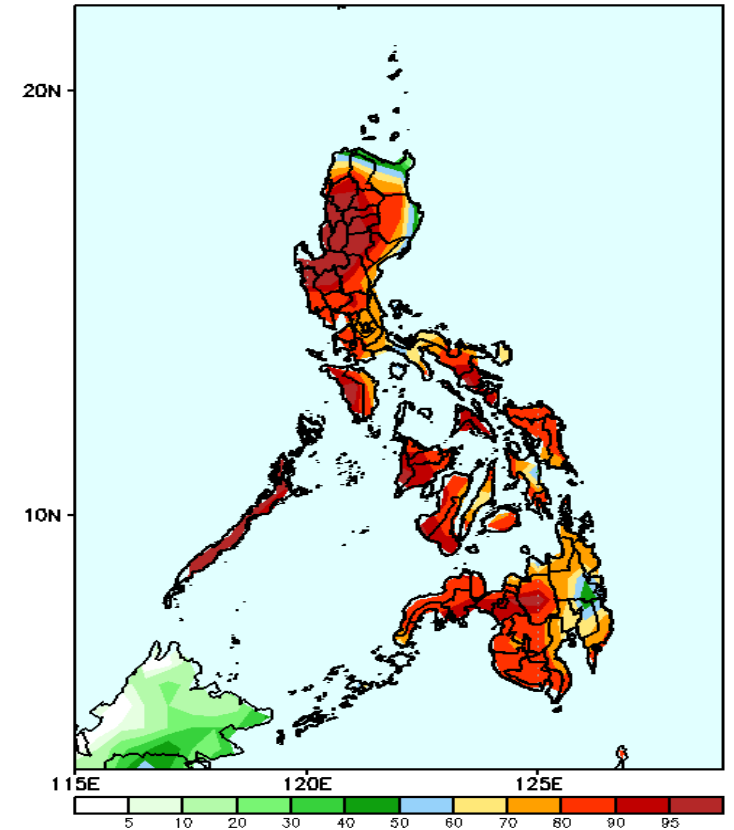
GEFS Week-1 Exceedance Prob. > 25mm  
Valid: 20240830 - 20240905



### Probability to Exceed 25mm

- High to very high across the country.

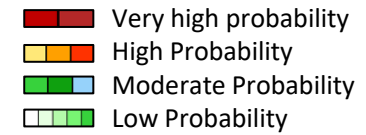
GEFS Week-1 Exceedance Prob. > 50mm  
Valid: 20240830 - 20240905



### Probability to Exceed 50mm

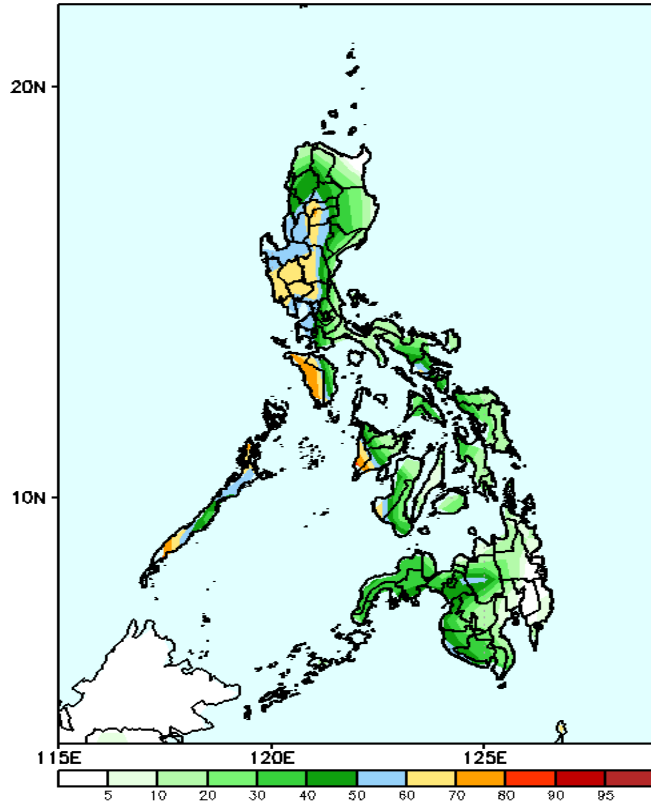
- High to very high over most parts of the country;
- Moderate to high over the northernmost portion of Northern Luzon, eastern portion of Isabela, Leyte provinces and Eastern Mindanao.

# Exceedance Probability > 100/150/200 mm



## Week 1: Aug 30- Sep 05, 2024

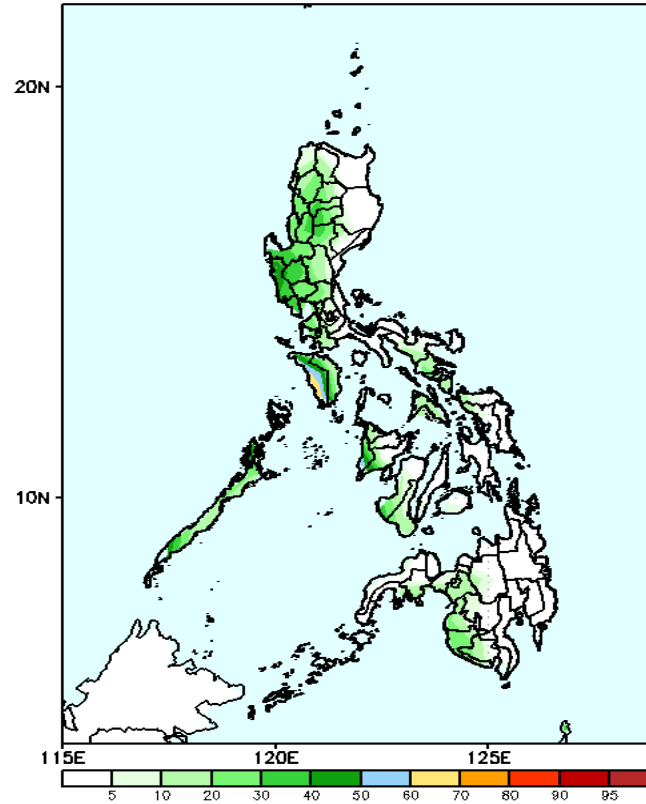
GEFS Week-1 Exceedance Prob. > 100mm  
Valid: 20240830 - 20240905



### Probability to Exceed 100mm

- Moderate to high over the southern portion of CAR, La Union, Pangasinan, most of Central Luzon, NCR, Batangas, Cavite, Laguna, Palawan, Occidental Mindoro, and the western portion of Western Visayas;
- Low to moderate over the rest of the country.

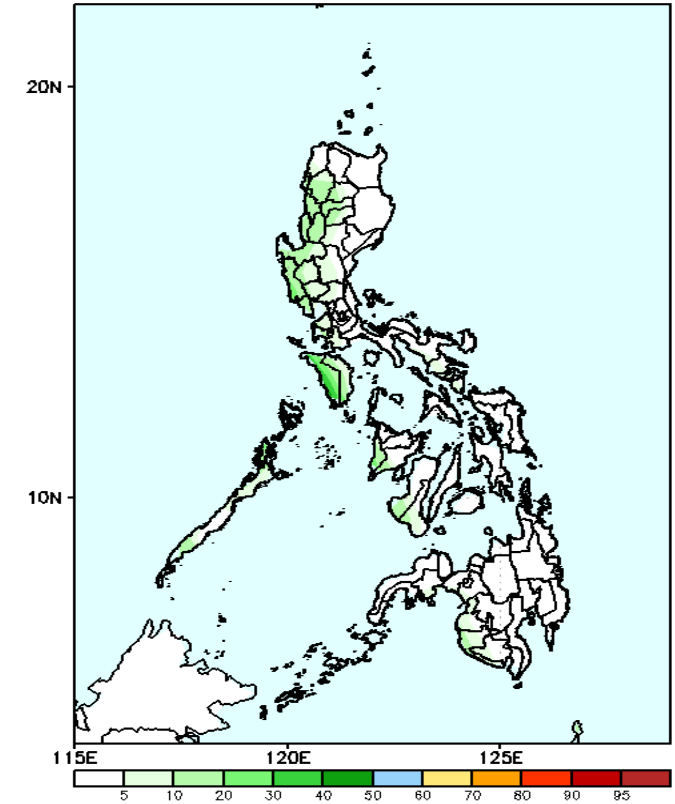
GEFS Week-1 Exceedance Prob. > 150mm  
Valid: 20240830 - 20240905



### Probability to Exceed 150mm

- Moderate to high over Occidental Mindoro and the northern portion of Palawan;
- Low to moderate over the rest of Western Luzon;
- Low over the rest of the country.

GEFS Week-1 Exceedance Prob. > 200mm  
Valid: 20240830 - 20240905



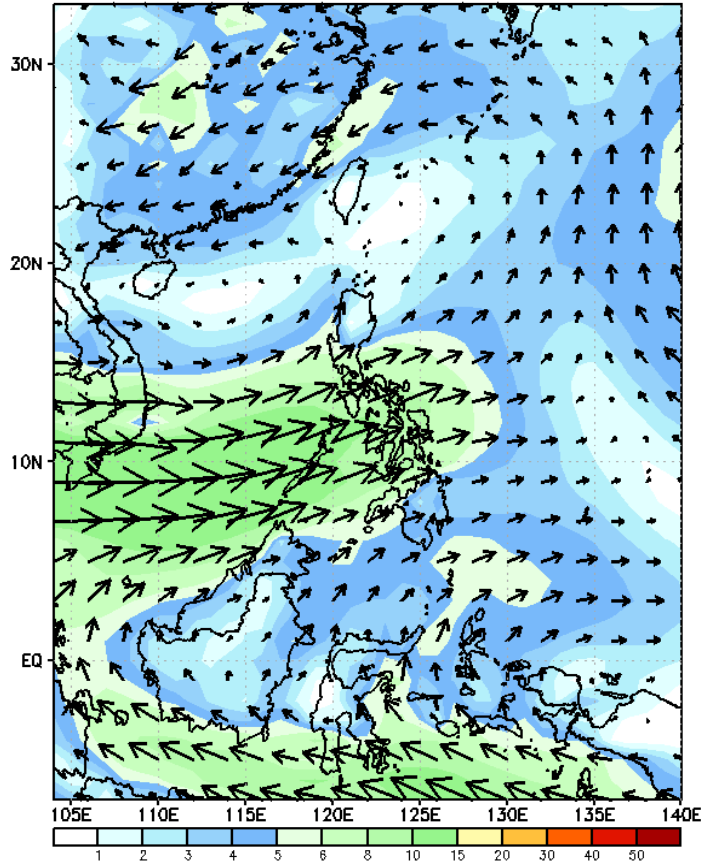
### Probability to Exceed 200mm

- Low across the country.

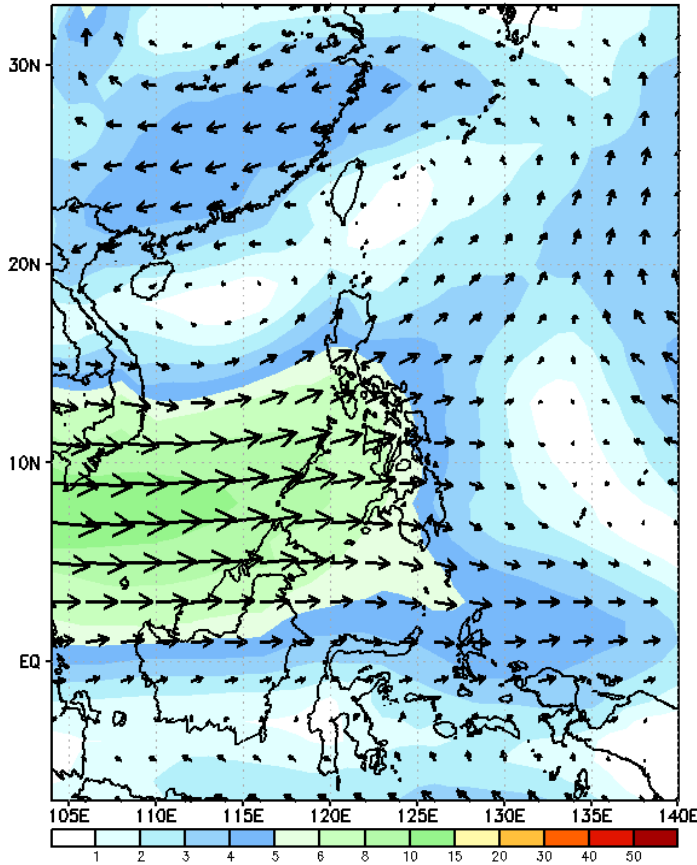
# GEFS Week-2 Wind Forecasts:

Week 2: Sep 06-12, 2024

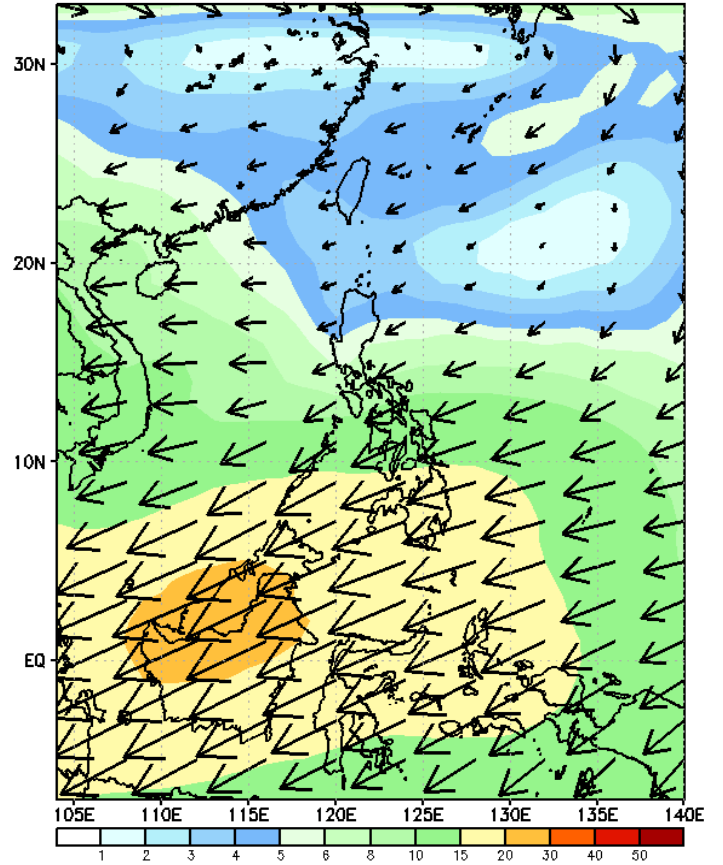
GEFS Week-2 850-hPa Wind Total  
Valid: 20240906 - 20240912



GEFS Week-2 700-hPa Wind Total  
Valid: 20240906 - 20240912

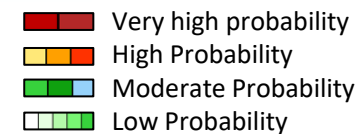


GEFS Week-2 200-hPa Wind Total  
Valid: 20240906 - 20240912



Southwest Monsoon affecting the western sections of the country.

# Precipitation Anomaly and Exceedance Probability > 25/50 mm

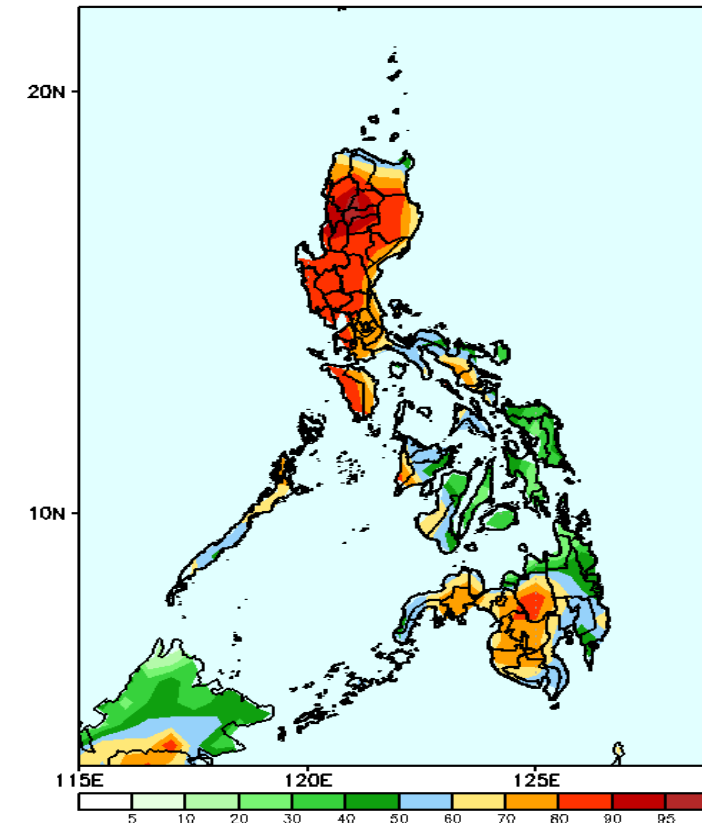
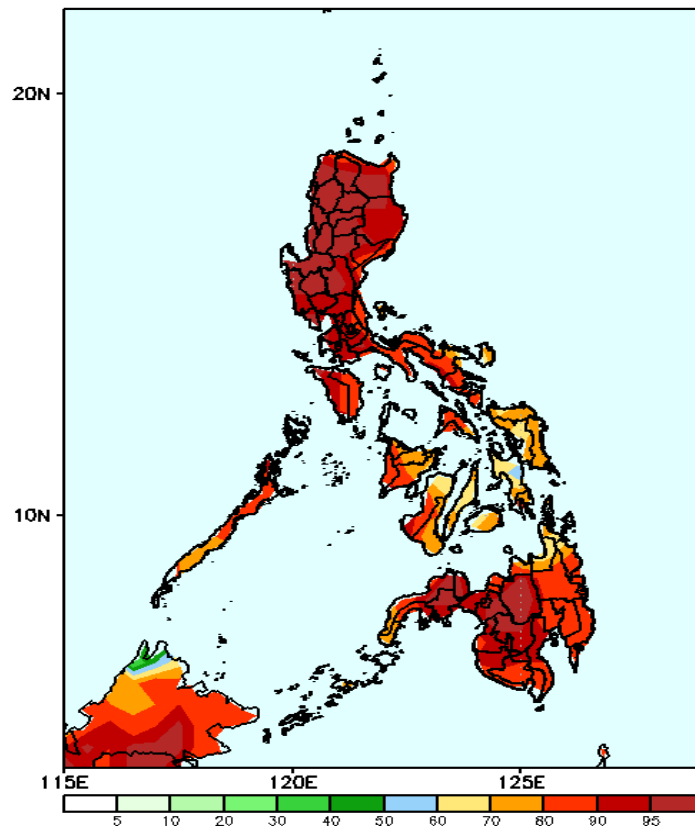
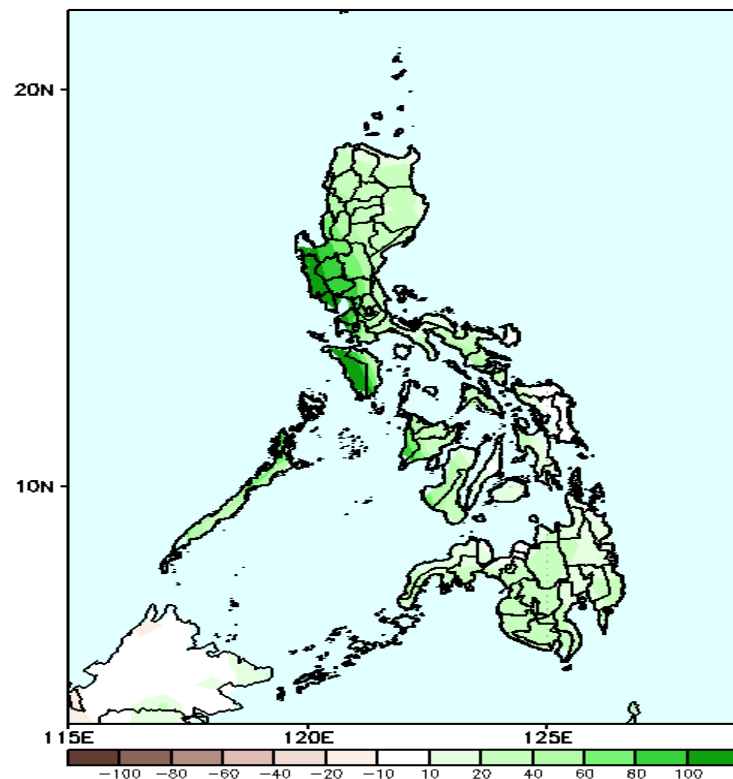


Week 2: Sep 06-12, 2024

GEFS Week-2 Exceedance Prob. > 25mm  
Valid: 20240906 - 20240912

GEFS Week-2 Exceedance Prob. > 50mm  
Valid: 20240906 - 20240912

GEFS Week-2 Precip Anomaly  
Valid: 20240906 - 20240912



40-100mm increase in rainfall is likely in Central Luzon and Mindoro while 20-60mm in rainfall is expected over the rest of the country.

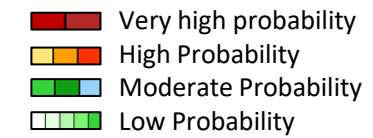
### Probability to Exceed 25mm

- High to very high over Luzon and Mindanao;
- Moderate to high over Visayas.

### Probability to Exceed 50mm

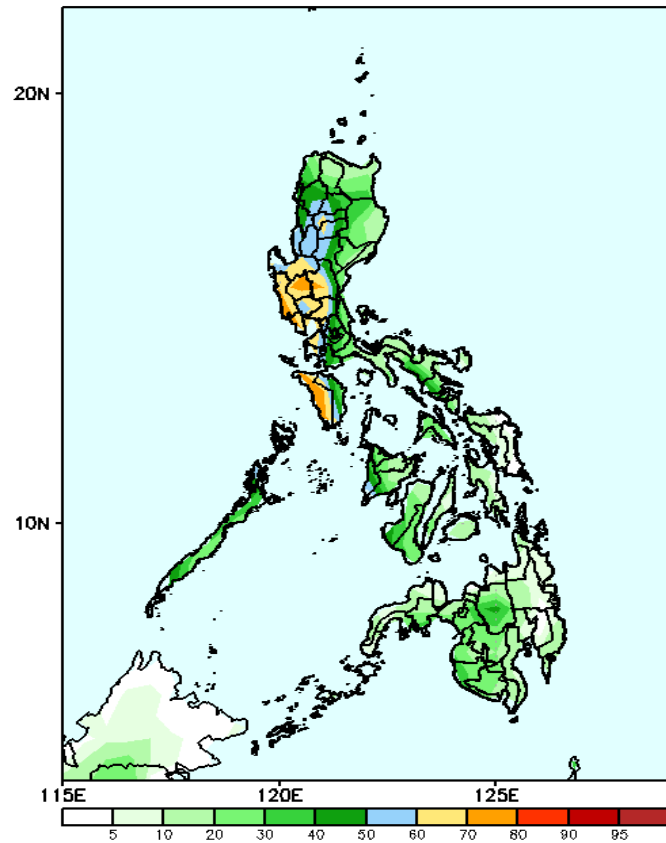
- High to very high over most of Northern Luzon, Central Luzon, NCR, most of CALABARZON, Mindoro Provinces, and Bukidnon;
- Moderate to high over the rest of the country.

# Exceedance Probability > 100/150/200 mm



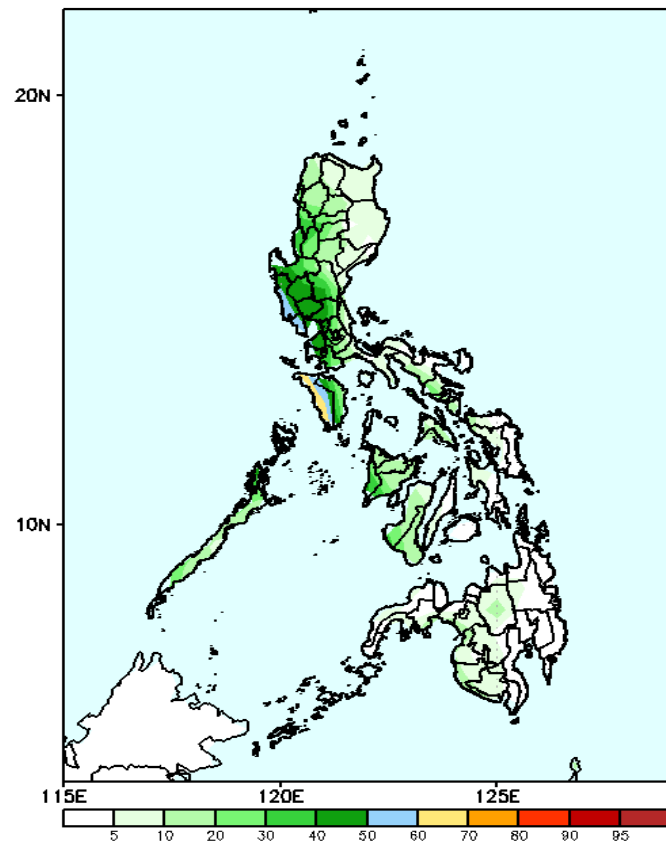
## Week 2: Sep 06-12, 2024

GEFS Week-2 Exceedance Prob. > 100mm  
Valid: 20240906 - 20240912



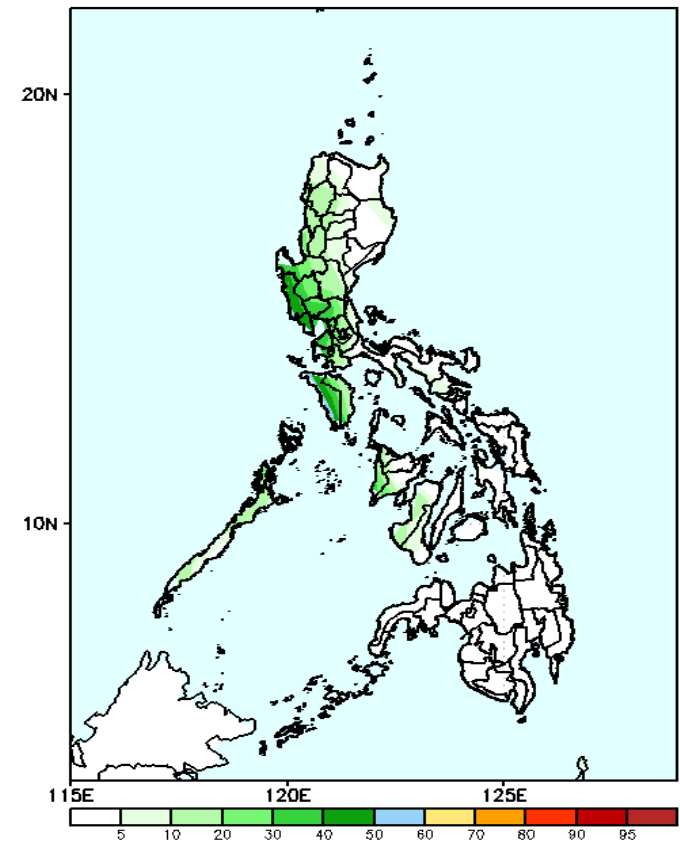
- Probability to Exceed 100mm**
- Moderate to high over Mt. Province, Ifugao, Pangasinan, most of Central Luzon, NCR, Batangas, Cavite, Mindoro Provinces and the northern portion of Palawan;
  - Low to moderate over the rest of the country.

GEFS Week-2 Exceedance Prob. > 150mm  
Valid: 20240906 - 20240912



- Probability to Exceed 150mm**
- Moderate to high over Bataan, western section of Batangas, Occidental Mindoro and the northern portion of Palawan;
  - Low to moderate over the rest of Western Luzon;
  - Low over the rest of the country.

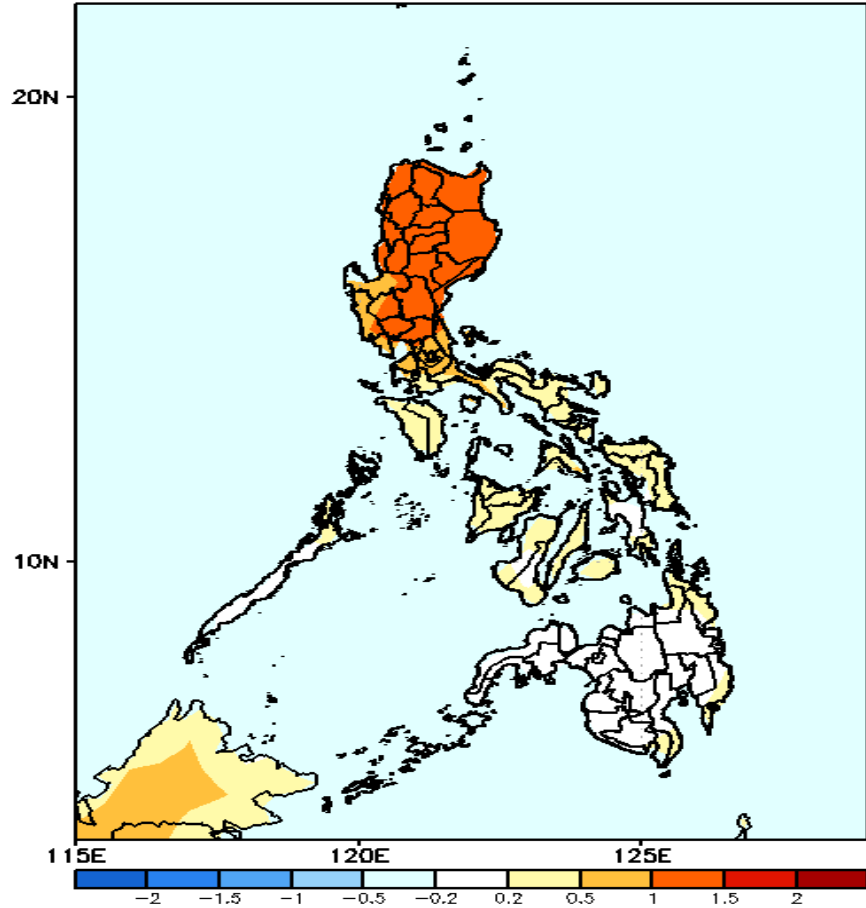
GEFS Week-2 Exceedance Prob. > 200mm  
Valid: 20240906 - 20240912



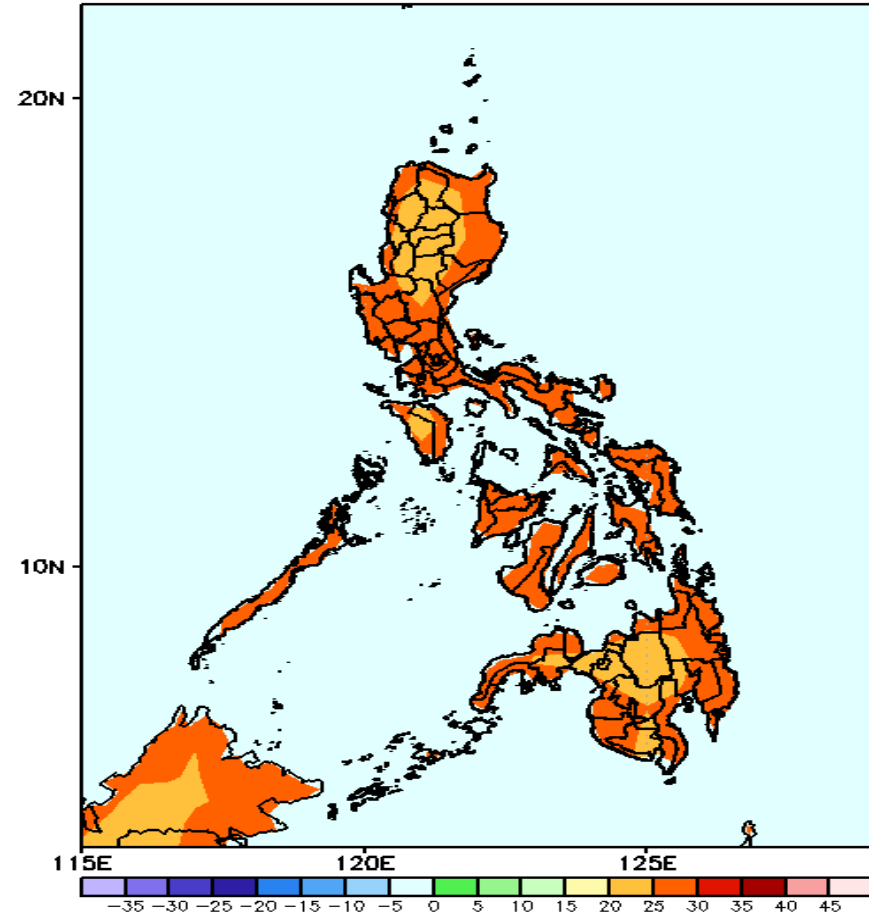
- Probability to Exceed 200mm**
- Low probability across the country.

# GEFS Week-1 & 2 Forecasts: T2m Anomaly

GEFS Week-1 T2m Anomaly  
Valid: 20240830 - 20240905



GEFS Week-2 T2m Total  
Valid: 20240906 - 20240912



## 2m Temperature Week 1: Aug 30- Sep 05, 2024

Warmer surface air temperature will likely be experienced in most parts of Northern and Central Luzon while near to slightly warmer surface air temperature is expected over Visayas and Mindanao.

## 2m Temperature Week 2: Sep 06-12, 2024

Slightly warmer to warmer surface air temperature will likely be experienced in most parts of the country.